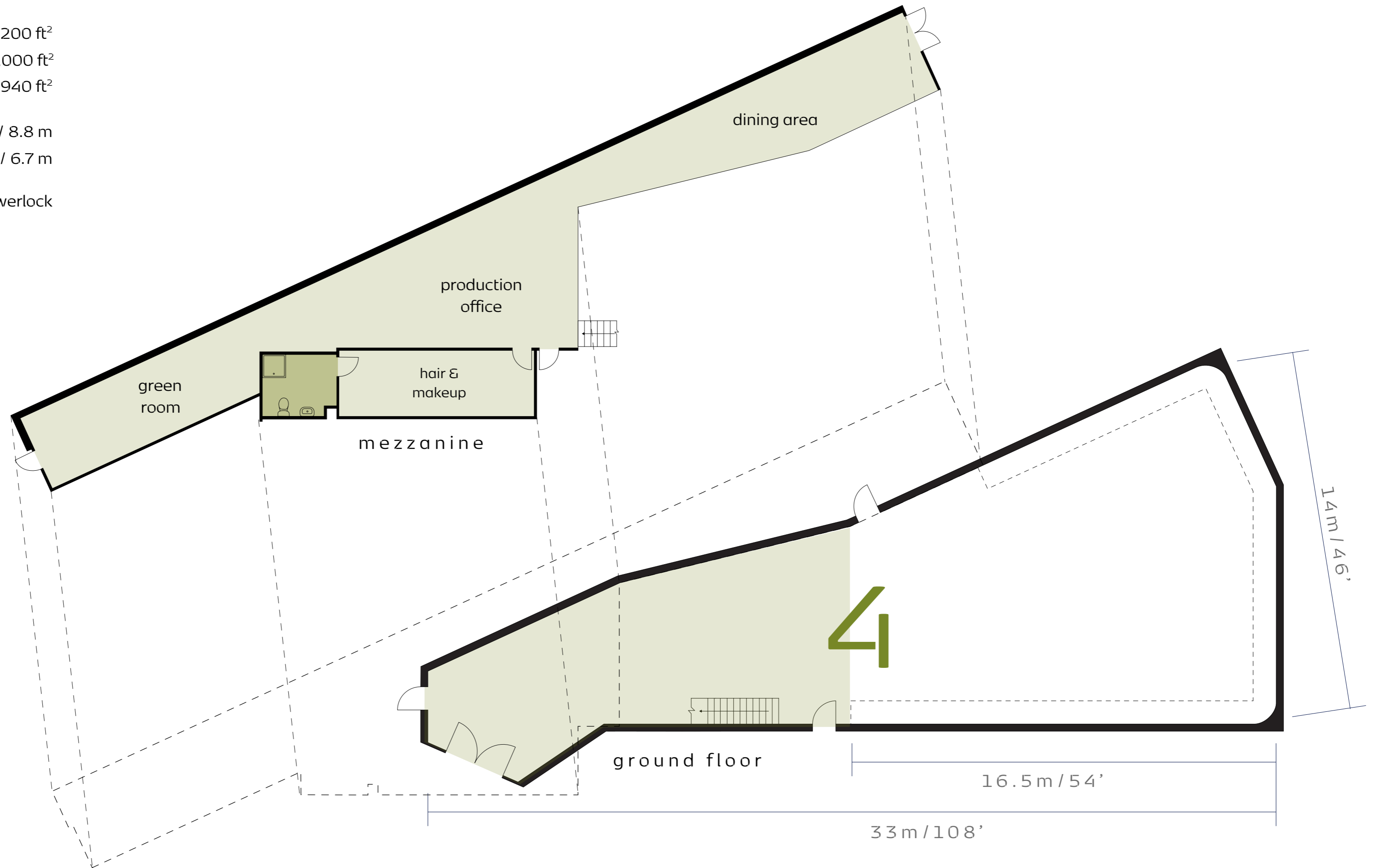


STUDIO 4

Total area: 5,200 ft²
Main studio: 4,000 ft²
Cove area: 1,940 ft²

Ceiling height: 29 ft / 8.8 m
Height to roof truss: 22 ft / 6.7 m

Power: 200A 3P Powerlock



70 Stanley Gardens, London W3 7SZ

t: 020 7043 4301

e: hello@thetankfactory.co.uk

SITE PLAN

