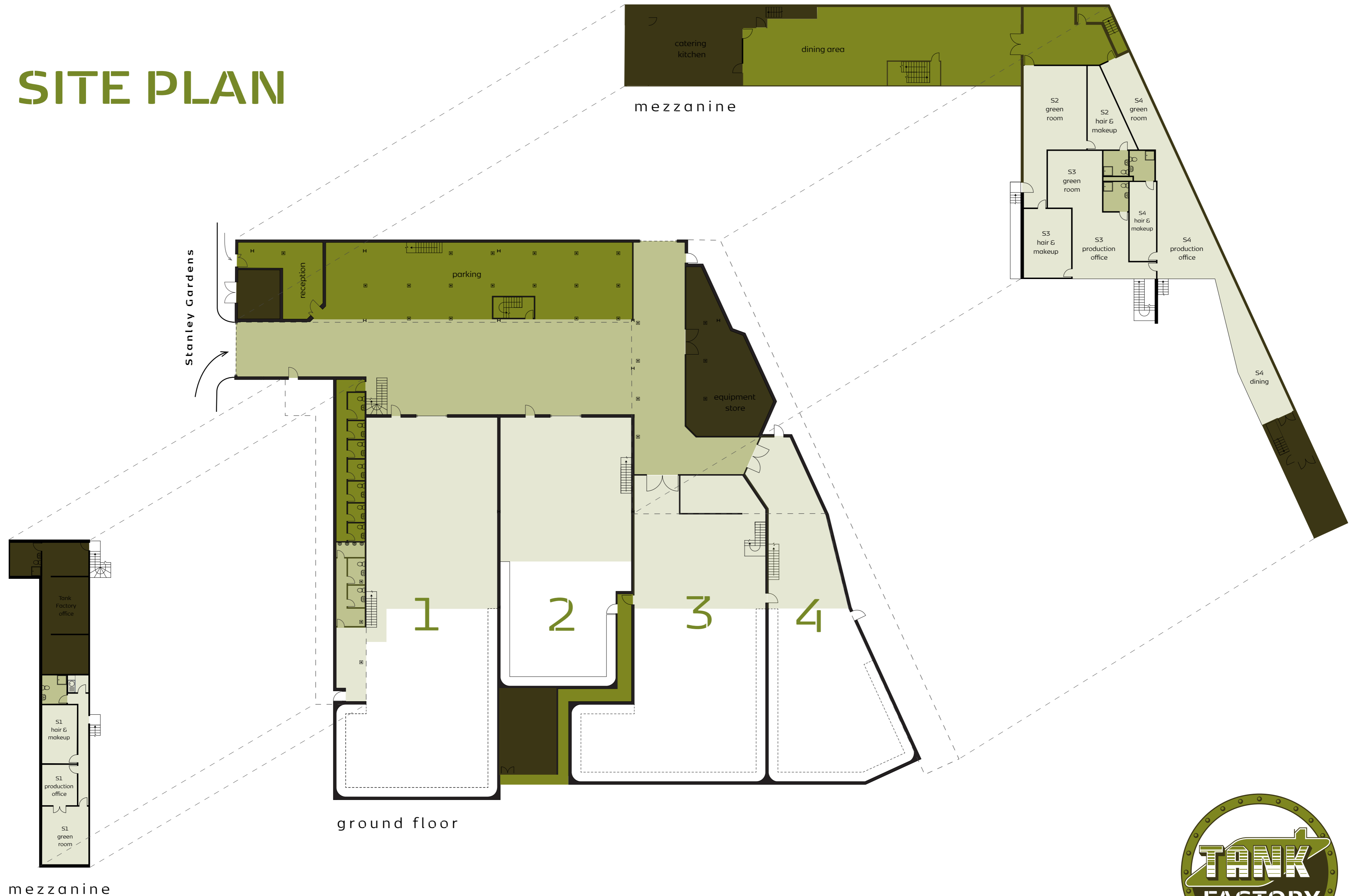




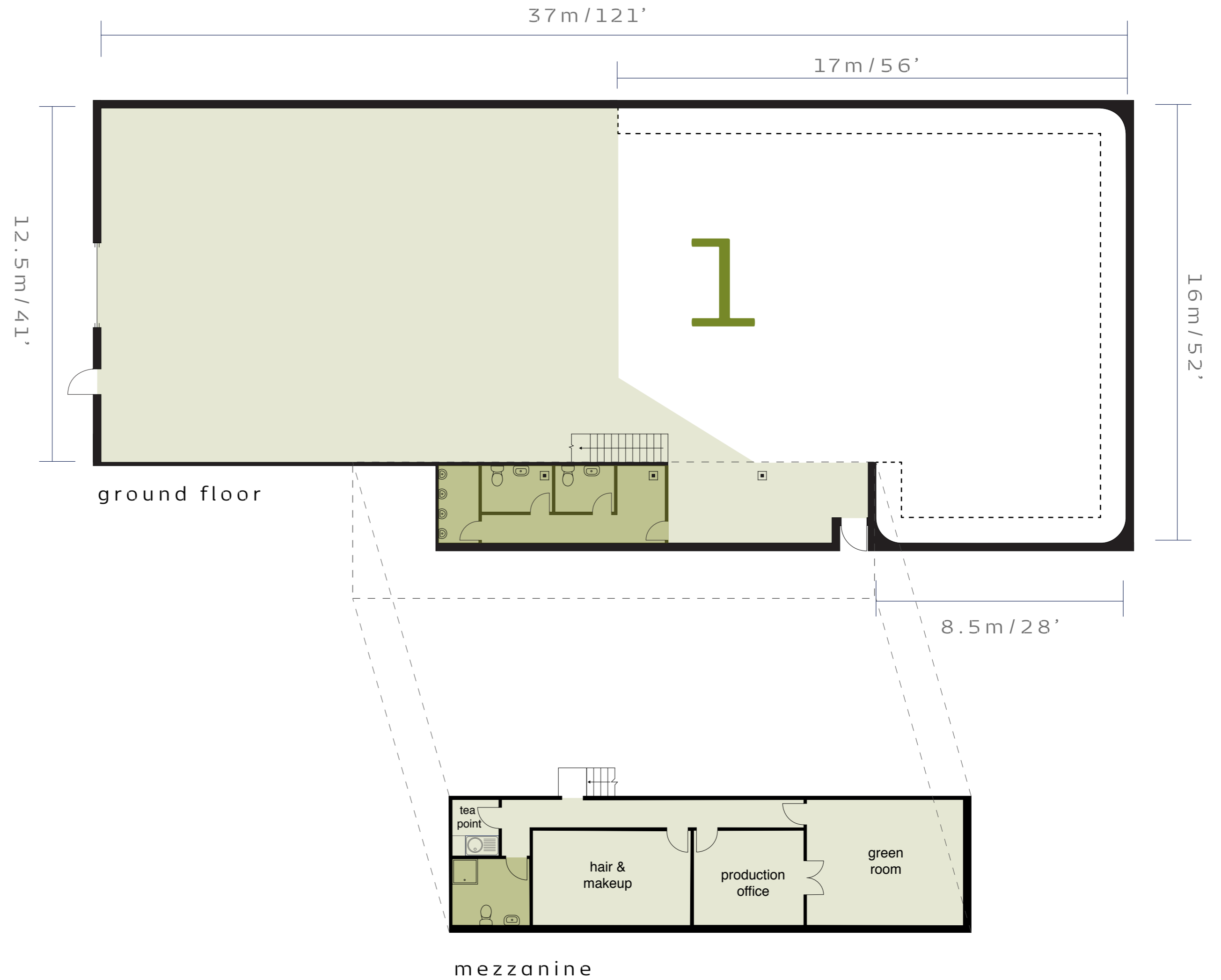
**STUDIO PLANS**

# SITE PLAN



# STUDIO 1

**Total area:** 7,550 ft<sup>2</sup>  
**Main studio:** 6,710 ft<sup>2</sup>  
**Cove area:** 3,500 ft<sup>2</sup>  
**Ceiling height:** 29 ft / 8.8 m  
**Height to roof truss:** 22 ft / 6.7 m  
**Power:** 400A 3P Powerlock



70 Stanley Gardens, London W3 7SZ

t: 020 7043 4301

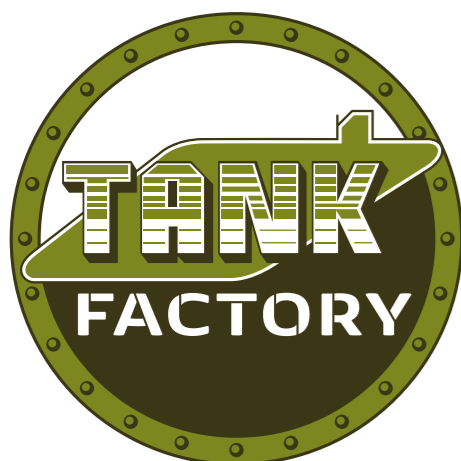
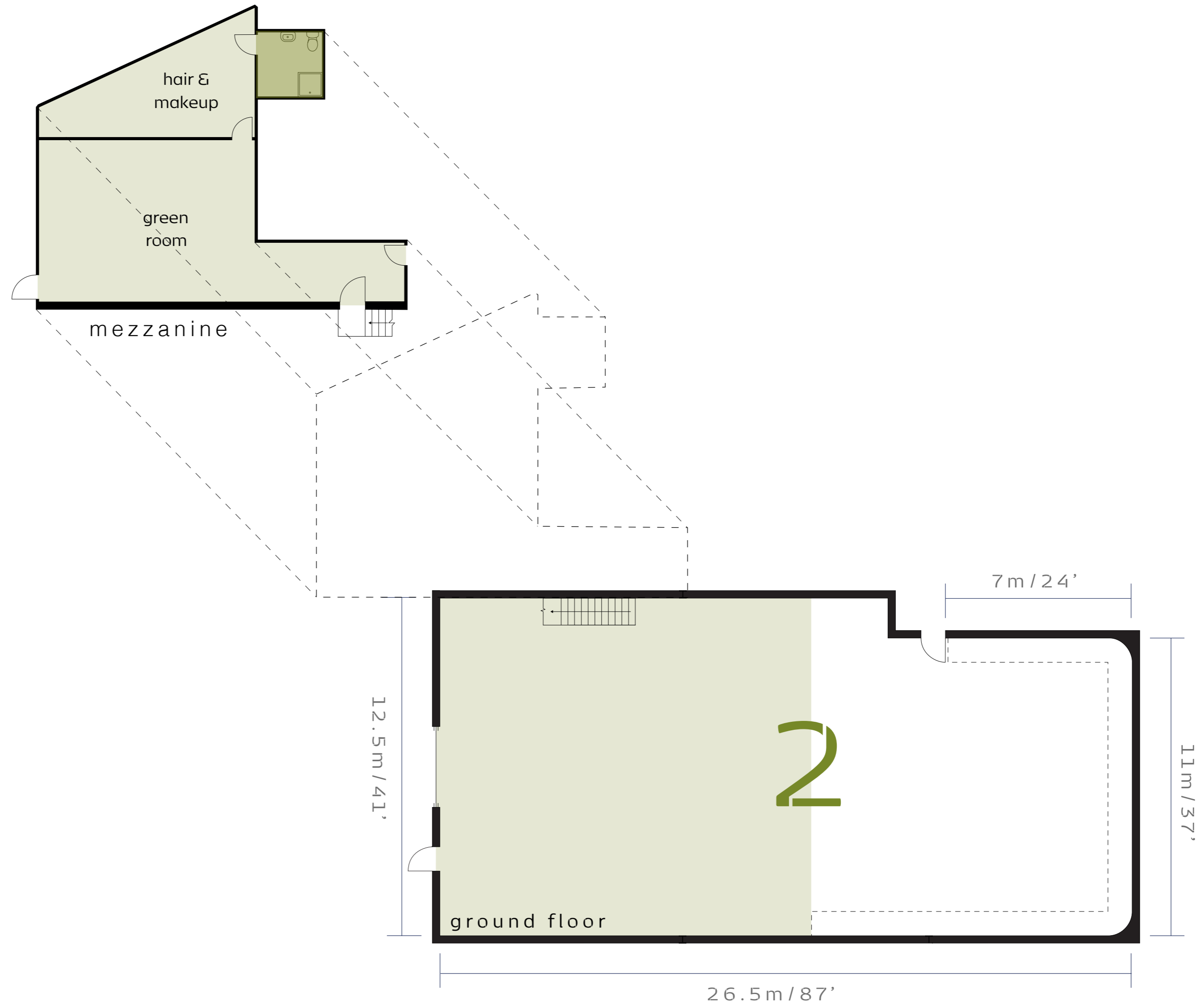
e: [hello@thetankfactory.co.uk](mailto:hello@thetankfactory.co.uk)

# STUDIO 2

**Total area:** 5,200 ft<sup>2</sup>  
**Main studio:** 3,500 ft<sup>2</sup>  
**Cove area:** 1,500 ft<sup>2</sup>

**Ceiling height:** 29 ft / 8.8 m  
**Height to roof truss:** 22 ft / 6.7 m

**Power:** 200A 3P Powerlock



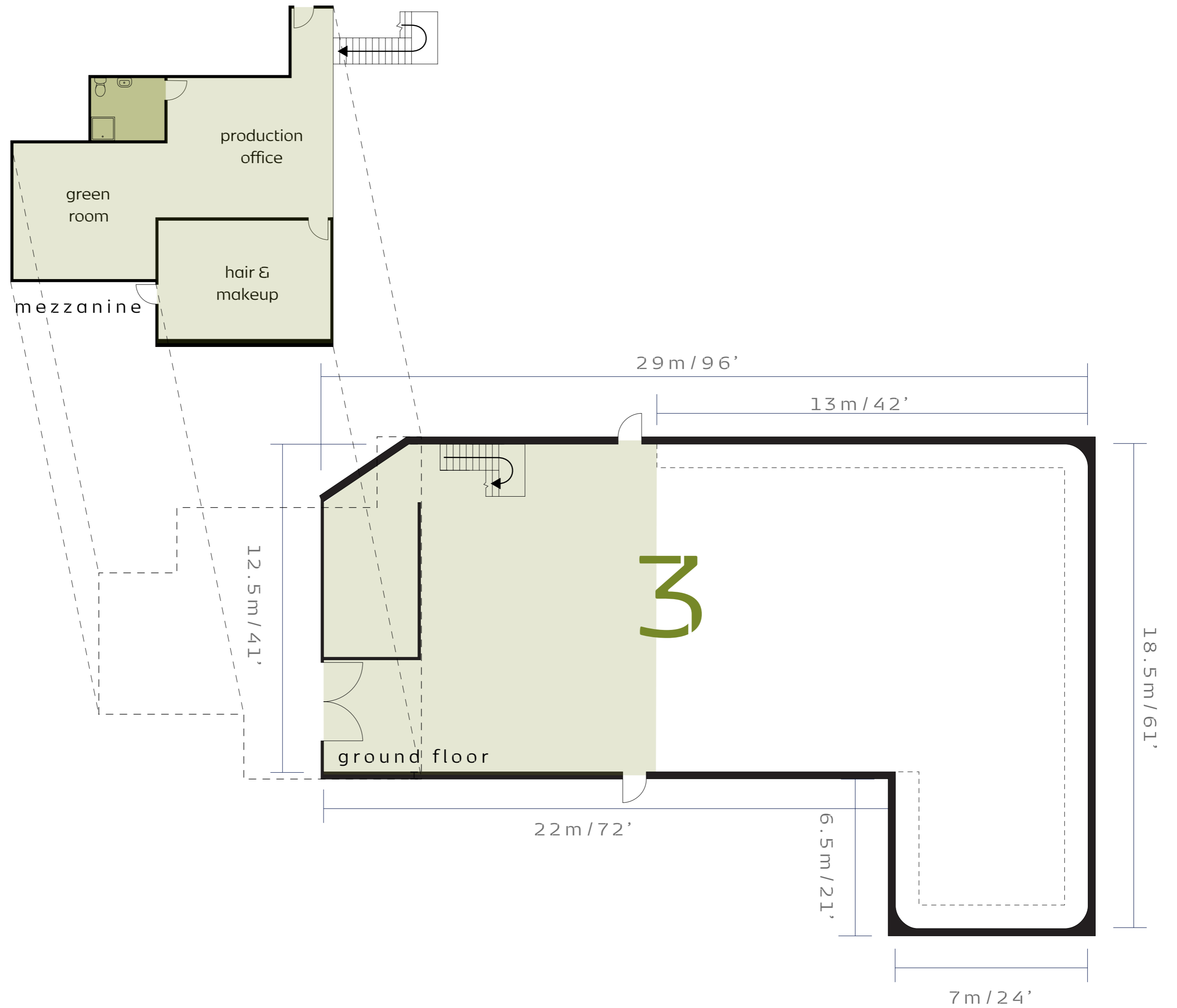
70 Stanley Gardens, London W3 7SZ

t: 020 7043 4301

e: [hello@thetankfactory.co.uk](mailto:hello@thetankfactory.co.uk)

# STUDIO 3

Total area: 6,400 ft<sup>2</sup>  
Main studio: 4,400 ft<sup>2</sup>  
Cove area: 2,600 ft<sup>2</sup>  
Ceiling height: 29 ft / 8.8 m  
Height to roof truss: 22 ft / 6.7 m  
Power: 400A 3P Powerlock



70 Stanley Gardens, London W3 7SZ

t: 020 7043 4301

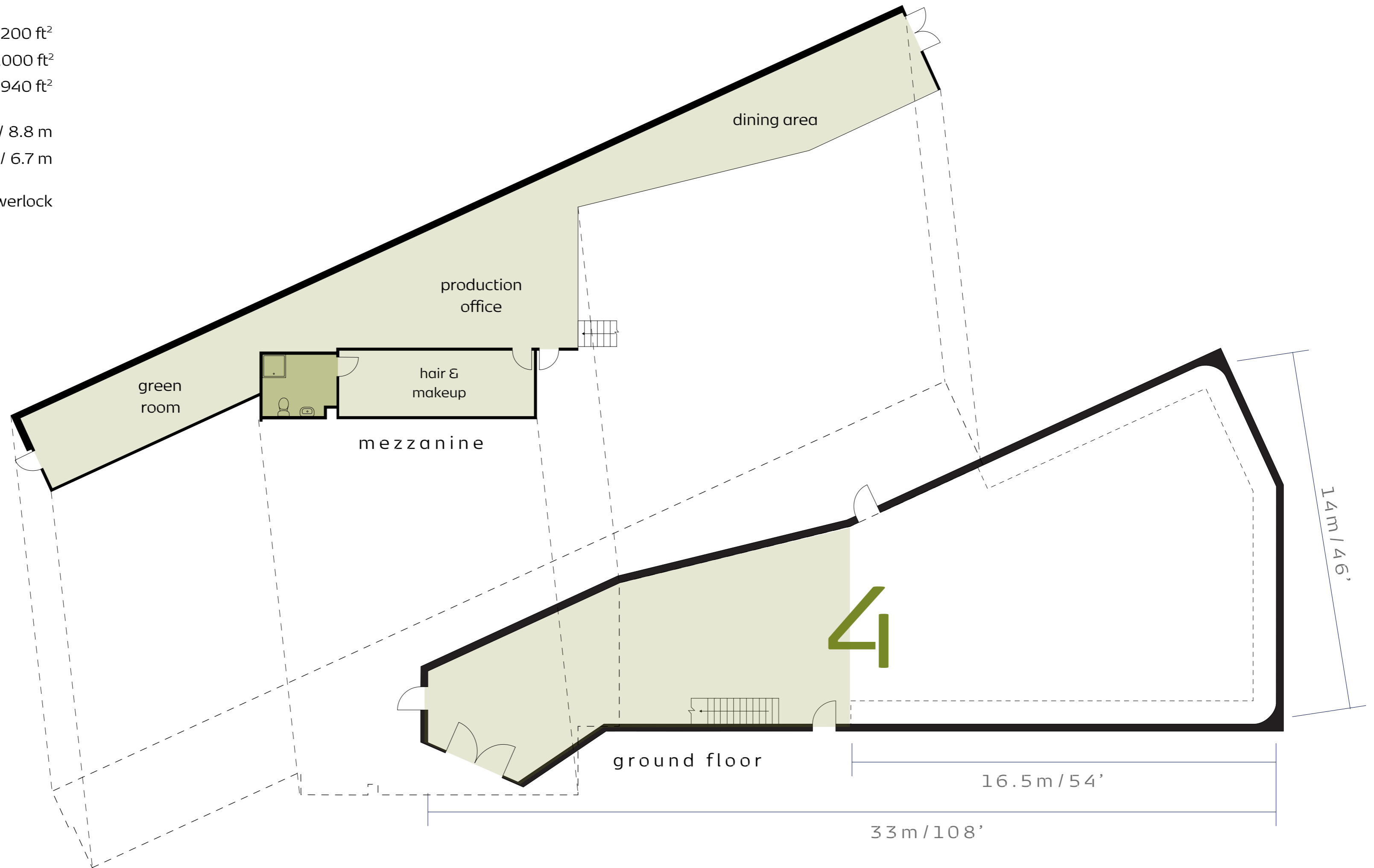
e: [hello@thetankfactory.co.uk](mailto:hello@thetankfactory.co.uk)

# STUDIO 4

Total area: 5,200 ft<sup>2</sup>  
Main studio: 4,000 ft<sup>2</sup>  
Cove area: 1,940 ft<sup>2</sup>

Ceiling height: 29 ft / 8.8 m  
Height to roof truss: 22 ft / 6.7 m

Power: 200A 3P Powerlock



70 Stanley Gardens, London W3 7SZ

t: 020 7043 4301

e: [hello@thetankfactory.co.uk](mailto:hello@thetankfactory.co.uk)

# CONTACT US



020 7043 4301



[hello@thetankfactory.co.uk](mailto:hello@thetankfactory.co.uk)



[thetankfactory.co.uk](http://thetankfactory.co.uk)



The Tank Factory  
70 Stanley Gardens  
London W3 7SZ

